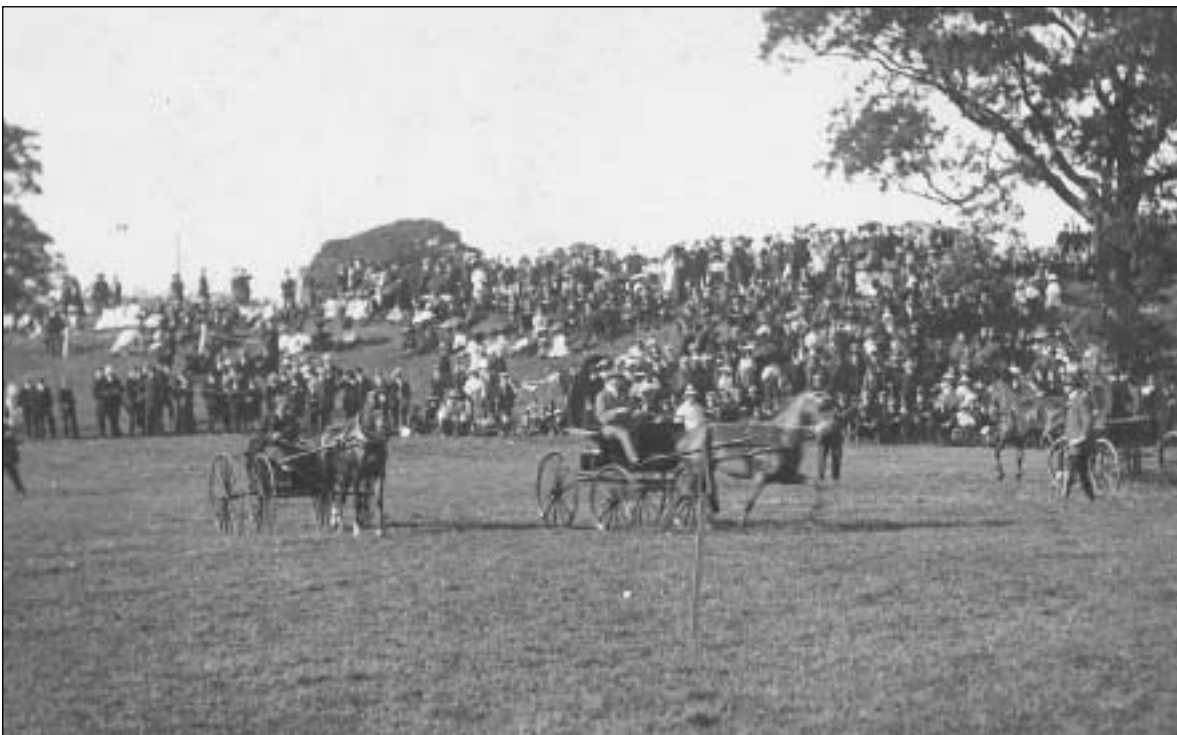


Y Sioe

Sefydlwyd Cymdeithas Amaethyddol a Garddwriaethol Tal-y-bont a Gogledd Ceredigion ar 19 Chwefror 1896 gyda'r nod o gynnal sioe flynyddol ym mis Medi o dan adain y gymdeithas honno. Prif amcan y Gymdeithas oedd cynnig gwobrwyon i denantiaid, rhydd-ddeiliaid a bythynwyr yr ardal rhwng yr afon Llyfnant a'r afon Rheidol yng ngogledd Ceredigion. Yn ystod y bedwaredd ganrif ar bymtheg ceisiwyd sefydlu a chynnal sawl sioe yn Aberystwyth, ond dirwyn i ben eu talar fu hanes pob un ohonynt. Hynny'n bennaf am nad oedd y meistri tir mwyaf eu dylanwad megis Gogerddan, y Trawsgoed, Nanteos, Abermâd, Penglais ac eraill, yn gweld llygad yn llygad. Ond er gwaethaf pob cynnig a methiant i sefydlu sioe yn Aberystwyth, yr oedd gan Syr Pryse Pryse, Gogerddan, freuddwyd i gael un sioe i ogledd y sir cystal os nad gwell na'r sioeau a sefydlwyd eisoes yng Nghaerfyrddin, Castell Newydd Emlyn, Llambed, Aberteifi a Machynlleth. Rhwng 1861 a 1894 fe gynhaliodd Syr Pryse sioe i denantiaid ystad Gogerddan, ond er mor llywyddiannus fu'r sioeau hyn, ei freuddwyd oedd sefydlu sioe fwy eang ei gorwelion a

The Show

Tal-y-bont and North Ceredigion Agricultural and Horticultural Society was formed on 19th February 1896 with the aim of holding an annual show in September organised by that society. The main purpose of the Society was to award prizes to tenants, freeholders and smallholders in the area between the river Llyfnant and the river Rheidol in north Ceredigion. During the nineteenth century there were many unsuccessful attempts to hold shows in Aberystwyth. This was because the most influential landowners such as Gogerddan, Trawsgoed, Nanteos, Abermâd, Penglais and others did not see eye to eye. But despite all attempts and the failure to establish a show in Aberystwyth, Sir Pryse Pryse, Gogerddan, had the dream of having a show in north Ceredigion which would be as good as if not better than the shows already established in Carmarthen, Newcastle Emlyn, Lampeter, Cardigan and Machynlleth. Between 1861 and 1894 Sir Pryse held a show for tenants of the Gogerddan estate, but although these shows were very successful, his dream was to establish a show in which everybody in the



Y Sioe ar droad y ganrif (E.O. Jones)

The Show at the turn of the century (E.O. Jones)

fyddai'n agored i bawb yng ngogledd y sir. Cynhaliwyd dwy ras drotian yn Nhal-y-bont yn 1894 a 1895, ond arbrawf yn unig oedd y rhain er mwyn mesur yr hinsawdd ar gyfer sefydlu sioe amaethyddol ar raddfa lawer mwy uchelgeisiol.

Roedd sefydlu'r sioe gyntaf yn 1896 yn llwyddiant mawr, a thyfu o nerth i nerth fu ei hanes o'r dechrau, er gwaethaf pob dirwasgiad yn y byd amaethyddol, dau ryfel byd a nifer o newidiadau mawr ym mhatrwm y gymdeithas wledig. Wedi'r cyfan, ffenestr siop y diwydiant amaeth yw pob sioe yn ei hanfod. Does neb bellach ers blynyddoedd sy'n cofio'r sioe gyntaf. Go brin fod na lawer ar ôl sy'n cofio'r sioe yn dathlu ei phenblwydd yn un ar hugain oed yn 1916, ond yr oedd y sioe honno'n drobwynt yn ei hanes. Yn yr hen ysgol y cynhelid y pwyllgorau cynharaf, ond oherwydd bod yr aelodau yn gadael cymaint o lanastr ar eu holau, nid oedd yr ystafell yn gymwys i'r plant ei defnyddio'r bore canlynol. Y rheswm oedd fod y lloriau a'r desgiau yn llaid a phoeriadau baco i gyd ac o'r herwydd yn gwbl anaddas ar gyfer y plant. Aed ati wedyn i gynnal y pwyllgorau yn y ddwy dafarn, ac er i'r Neuadd Goffa gael ei hagor yn 1924, yn y Llew Du neu'r Llew Gwyn y cynhelid nifer helaeth o'r cyfarfodydd hyn hyd at yr Ail Ryfel Byd.

Bu uchelfannau ac iselfannau yn ei hanes, gan ei bod hi'n adlewyrchu'r sefyllfaoedd

north of the county would be able to compete. Two trotting races were held in Tal-y-bont in 1884 and 1895, but these were only an experiment in order to test the water in preparation for establishing an agricultural show on a much more ambitious scale.

The first show held in 1896 was a great success, and it continued to grow from strength to strength, despite every depression in agriculture, the two world wars and the several substantial changes to the pattern of the rural community. After all, every show is the shop window of the agricultural industry. There is nobody now who can recall the first show. It is unlikely that there are many who remember the show celebrating its twenty first birthday in 1916, but that particular show was a turning point in its history. The earliest committee meetings were held in the old school, but because the members left it in such a mess it was unsuitable to be used by the children the following morning. The reason for this was the mud and spit left on the floors and desks making it totally unsuitable for the children. The committees were then held in the two public houses, and although the Memorial Hall was opened in 1924, it was in the Black or the White Lion that many meetings were held up until the Second World War.

There were high and low points in its history as it reflected the agricultural



Tri degau'r ganrif

The 1930s

yn y byd amaethyddol ar y pryd. Rhai o brif atyniadau'r sioeau cynnar oedd y rasys ceffylau, trotian ac arddangos ceffylau yn tynnu cerbydau, ac er mor boblogaidd oeddynt, bu'n rhaid eu diddymu'n ddiweddarach er mwyn diogelwch y tyrfaoedd oedd yn eu gwyllo. Bu'r sioe yn llwyddiant mawr o'r dechrau, gyda nifer y dosbarthiadau a'r cynigion yn cynyddu o flwyddyn i flwyddyn. Gyda threigliad y blynyddoedd ychwanegwyd dosbarthiadau o'r newydd a diddymwyd ambell un hefyd. Er gwaethaf dirwasgiad mawr y 1920au a'r 1930au cafwyd sioeau nodedig, a chymaint oedd ei chynnydd fel y penderfynwyd yn 1932 ei gwneud yn sioe agored i bobl ac anifeiliaid o'r tu allan i ardal gogledd Ceredigion. Erbyn hynny roedd wedi ennill enw da iddi ei hun fel un o'r sioeau gorau yn y sir, ac yn enwog am ei safon uchel.

Wedi'r Ail Ryfel Byd (1939–45) daeth newidiadau mawr i'r byd amaethyddol, â'r sioe yn adlewyrchu'r newidiadau hynny. Blynyddoedd blin oedd y 1950au o safbwynt y sioe, yn bennaf oherwydd diffyg cefnogaeth a thywydd gwlyb. Dyma gyfnod pan welwyd nifer o sioeau eraill yng Ngheredigion yn dirwyn i ben. Hwn oedd un o'r cyfnodau isaf yn ei hanes, a bu trafod a oedd dyfodol iddi ai pheidio. Ond fe ddaeth mudiad y Ffermwyr Ifanc i roi

situation at the time. Some of the main attractions of the early shows were the horse racing, trotting and the horse drawn vehicles exhibition, and although they were very popular, they had to be discontinued later for reasons of spectator safety. The show was a great success from the outset with the number of classes and entrants increasing annually. Over the years, new classes were included and others were discontinued. Despite the great depression of the 1920s and the 1930s exceptional shows were held, and such was their success that it was decided in 1932 to open up the show to people and livestock from beyond the north Ceredigion area. By then it had achieved the reputation of being one of the best shows in the county, and was famous for its high standard.

After the Second World War (1939–45) great changes came about in agriculture, which were reflected in the show. The 1950s were a low point as far as the show was concerned, mainly due to a lack of support and wet weather. This was a time when many shows in Ceredigion ceased to be held. This was one of the worst periods in its history, and there was some debate as to its future. But the Young Farmers breathed new life into it and they have made a big contribution ever since. As a result of the



Yr Adran Goginio, 1978

The Cookery Section, 1978

bywyd newydd iddi a mawr fu eu cyfraniad hwy oddi ar hynny. Canlyniad yr adfywiad oedd i'r sioe ddatblygu'n raddol i fod yn un o'r sioeau undydd gorau yng Nghymru.

Mae'n debyg mai cyfrinach ei llwyddiant oedd iddi ddatblygu ac arbrofi ychydig o flwyddyn i flwyddyn yn hytrach na glynu'n gaeth wrth batrwm traddodiadol y sioe amaethyddol. Un o'i nodweddion amlycaf yw mai sioe y bridiau Cymreig fu hi o'r dechrau, yn arbennig y gwartheg duon, y defaid mynydd, y merlod a'r cobiau. Tra oedd sioeau eraill yn troi at fridiau gwahanol, glynodd Tal-y-bont wrth y bridiau lleol cynhenid. Mae'r babell arddwriaethol wedi datblygu'n aruthrol er y 1970au a safon y cynnyrch yn eithriadol o uchel ar adegau. Daw beirniaid o'r Sioe Genedlaethol i Dal-y-bont yn gyson gan ganmol safon y cystadlu, a thros y blynyddoedd enillodd nifer fawr o gefnogwyr sioe Tal-y-bont yn y Sioe Genedlaethol hithau gydag anifeiliaid, cynnyrch gardd, blodau a gwaith llaw. Yn wir, dros y ganrif ddiwethaf bu llawer o enillwyr a chefnogwyr selocaf ein sioe ni yn beirniadu eu hunain yn y Sioe Genedlaethol. Yn ystod yr wythdegau fe ddatblygodd yn fwy o sioe deuluol gan anelu at gynnig pob math o atyniadau a fydd yn apelio at ddant pawb. Ers 1983 trefnwyd arddangosfa o hen beiriannau fferm, ac yn 1996 ym mlwyddyn

revival the show gradually developed into being one of the best one-day shows in Wales.

It appears that its success was due to the fact that it developed and experimented as years went by rather than adhering to the traditional pattern of an agricultural show. One of its most notable characteristics is that it has been the show of the Welsh breeds from the start, in particular the Welsh Blacks, the Welsh Mountain sheep, Welsh ponies and cobs. Whilst other shows turned to different breeds, Tal-y-bont adhered to the native local breeds. The horticultural tent has shown amazing development since the 1970s and the standard of the produce is extremely high at times. Judges from the National Show often come and these praise the standard of competition and over the years a large number of Tal-y-bont Show supporters have won prizes at the National Show with animals, garden produce, flowers and handicraft. Indeed, during the last century many of the winners and enthusiastic supporters of our show have been judges at the National Show. The eighties saw it develop more as a family show, offering all kinds of attractions to appeal to everyone. Since 1983 an exhibition of old farm machinery has been held, and in 1996, the show's centenary year a craft tent



Naw degau'r ganrif

The 1990s

dathlu canmlwyddiant y sioe ychwanegwyd pabell grefftau hefyd sydd wedi profi'n atyniad poblogaidd iawn.

Oddi ar y sioe gyntaf yn 1896 ni chynhaliwyd un sioe ar ddeg, ac un yn unig a ohiriwyd yn gyfan gwbl oherwydd y tywydd garw, sef 1985. Roedd hi wedi gwneud tywydd eithriadol o wlyb cyn y sioe a phe bai glaw ar y diwrnod fe fyddai'r cae wedi ei gorddi'n gors o laid. Rhaid felly oedd canslo'r babell ar y nos Fercher cyn y sioe, ond yn eironig iawn roedd hi'n heulog braf ar y Sadwrn canlynol. Er yr holl baratodau manwl dros gyfnod o fisoedd lawer, ar ran y pwyllgor a'r cystadleuwyr fel ei gilydd, y mae llwyddiant y sioe yn ddibynnol i raddau helaeth iawn ar y tywydd bondigrybwyll.

Hefin Llwyd

was added which has proved to be a most popular attraction.

Since the first show in 1896 eleven were not held and one, in 1985, was cancelled because of bad weather. It had been extremely wet before the show and if it had rained on the day the field would have been a mud bath. The marquee therefore had to be cancelled on the Wednesday evening before the show, but ironically it was a beautiful sunny day the following Saturday. Despite all the careful preparations over a period of many months, by the committee and the competitors, the success of the show depends to a large extent on the unreliable weather.

Hefin Llwyd



*Gareth Evans
yn y babell
grefftau, 2000*

*Gareth Evans
in the craft tent,
2000*